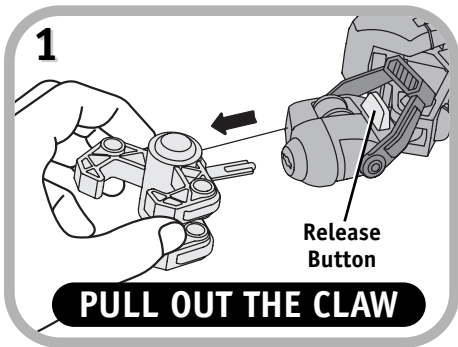


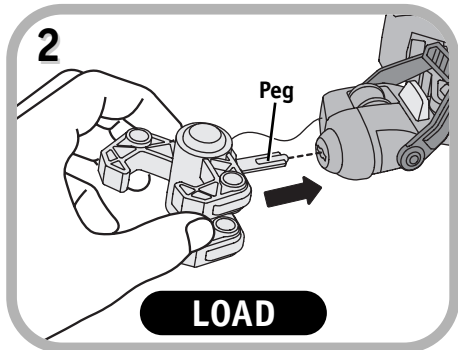
OPERATING THE WINCH

Please use these instructions for winch operation in place of those on page 7 in the original instructions.

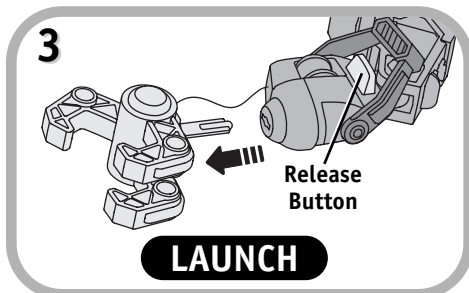


- Press the release button on URV's arm. Hold the grasping claw and pull out the cord.

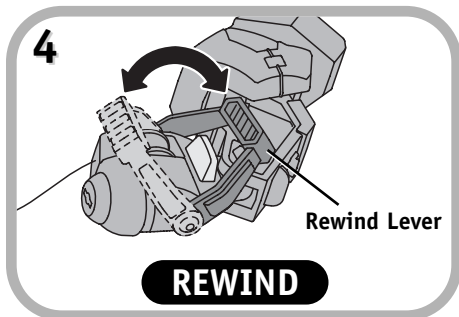
Hint: This will require some force and you will hear a loud "click."



- Insert the peg on the claw into the hole in the arm. Press the claw until it locks in place.



- Press the release button to launch the grasping claw.



- Move the rewind lever back and forth to reel the claw back in.

Now please refer back to the original instructions for additional information on URV.

Fisher-Price

Fisher-Price, Inc., subsidiary of Mattel, Inc.,
East Aurora, NY 14052 U.S.A.

©2002 Mattel, Inc. All Rights Reserved.
© and ™ designate U.S. trademarks of Mattel, Inc.

Printed in China

78362pr-0921