



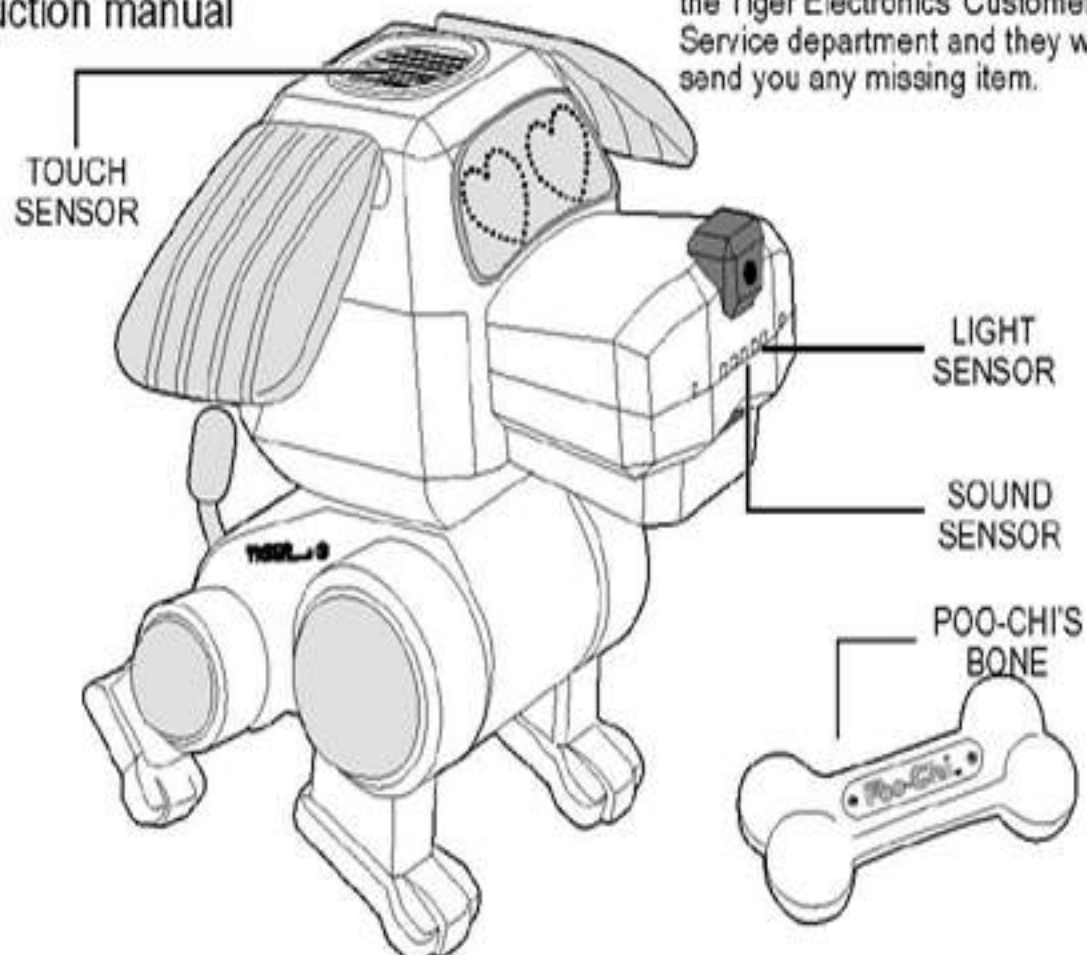
Poo-Chi, the Interactive Puppy, is a new type of friend! Poo-Chi expresses his emotions through his bright expressive eyes, flapping ears and wagging tail. Enjoy hours of playful singing, fun dancing and real puppy sounds. Poo-Chi uses advanced technology to create realistic emotional responses that adapt and change as you play with him. The more you play with Poo-Chi, the happier he becomes – he may even sing a special song for you!

CHECKLIST

The following items are included in this package:

- 1 – Poo-Chi, the Interactive Puppy
- 1 – Poo-Chi bone
- 1 – Instruction manual

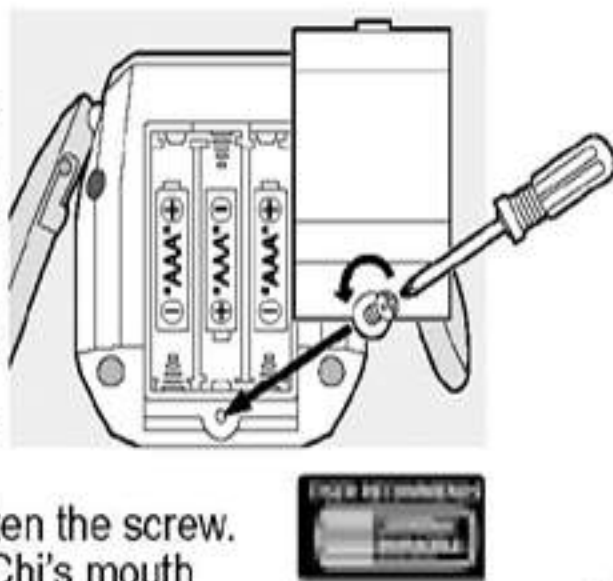
If anything is missing, please contact the Tiger Electronics Customer Service department and they will send you any missing item.



BATTERY INSTALLATION

IMPORTANT: Battery installation should be done by an adult. Always install the batteries correctly according to the positive (+) and negative (-) signs on the batteries.

1. Unscrew and remove the battery compartment door on the back of Poo-Chi's head.
2. Insert 3 "AAA"/LR03 batteries as shown inside the battery compartment.
3. Attach the battery compartment door and fasten the screw.
4. Press the **RESET** button located inside Poo-Chi's mouth (see **RESET** section for more details).



NOTE: Poo-Chi will begin to move as soon as you install the batteries. There is no on/off switch. To turn off, either remove the batteries or see the section titled "SLEEP".

HELPFUL TIP: Poo-Chi is a mechanical, robotic toy. The mechanical sound you hear when Poo-Chi moves is normal.

To ensure proper function:

- Do not mix old and new batteries.
 - Do not mix alkaline, standard or rechargeable batteries.
 - Battery installation should be done by adult.
 - Non-rechargeable batteries are not to be recharged.
 - Rechargeable batteries are to be removed from the toy before being charged (if removable).
 - Rechargeable batteries are only to be charged under adult supervision (if removable).
 - Only batteries of the same or equivalent type as recommended are to be used.
 - Batteries are to be inserted with the correct polarity.
 - Exhausted batteries are to be removed from the toy.
 - The supply terminals are not to be short-circuited.
- Replace with new batteries at the first sign of erratic operation.

SET UP

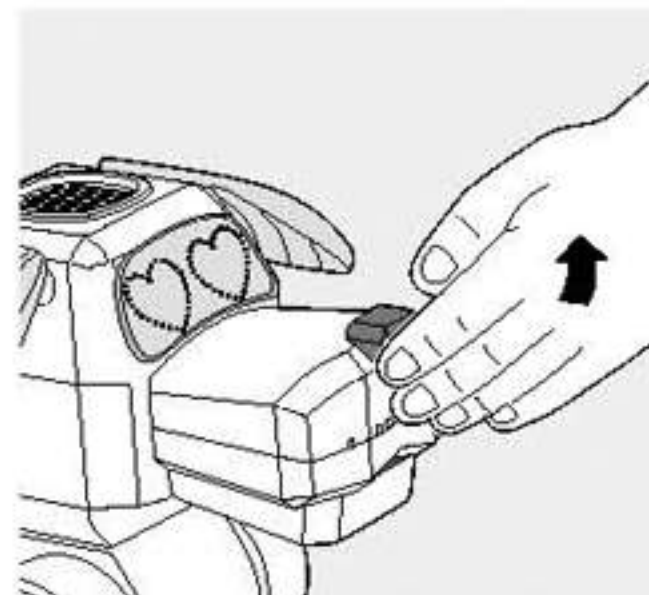
Poo-Chi will play the best on a smooth, flat surface. Make certain that the area is clear of obstacles so Poo-Chi can stand, sit and dance on his tiptoes! Poo-Chi should be played indoors.

POO-CHI'S SENSORS

Poo-Chi is very unpredictable. Activate one of Poo-Chi's sensors to see what he will do! Poo-Chi has three sensors: light sensor, sound sensor and a touch sensor.

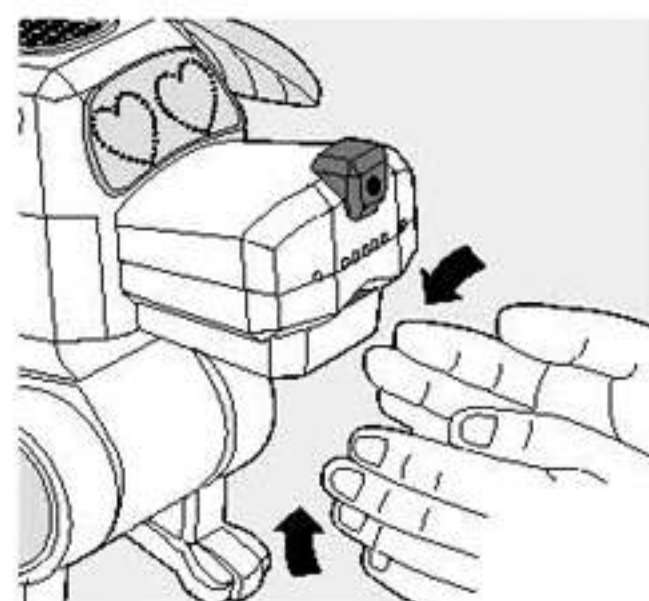
To activate the **LIGHT** sensor:

- **WAIT** until Poo-Chi stops moving.
- Slowly pass your hand in front of Poo-Chi's nose.
- When you move your hand away from Poo-Chi's nose, Poo-Chi will respond.



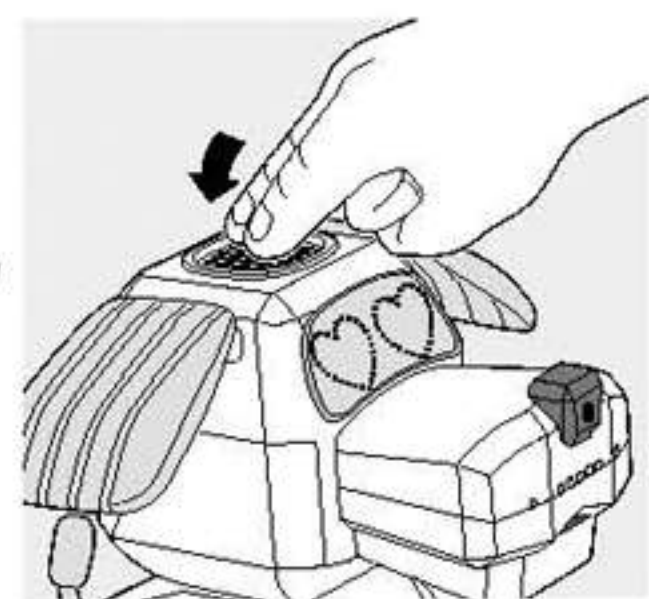
To activate the **SOUND** sensor:

- **WAIT** until Poo-Chi stops moving.
- Simply clap your hands or make a loud sound. Poo-Chi will respond.



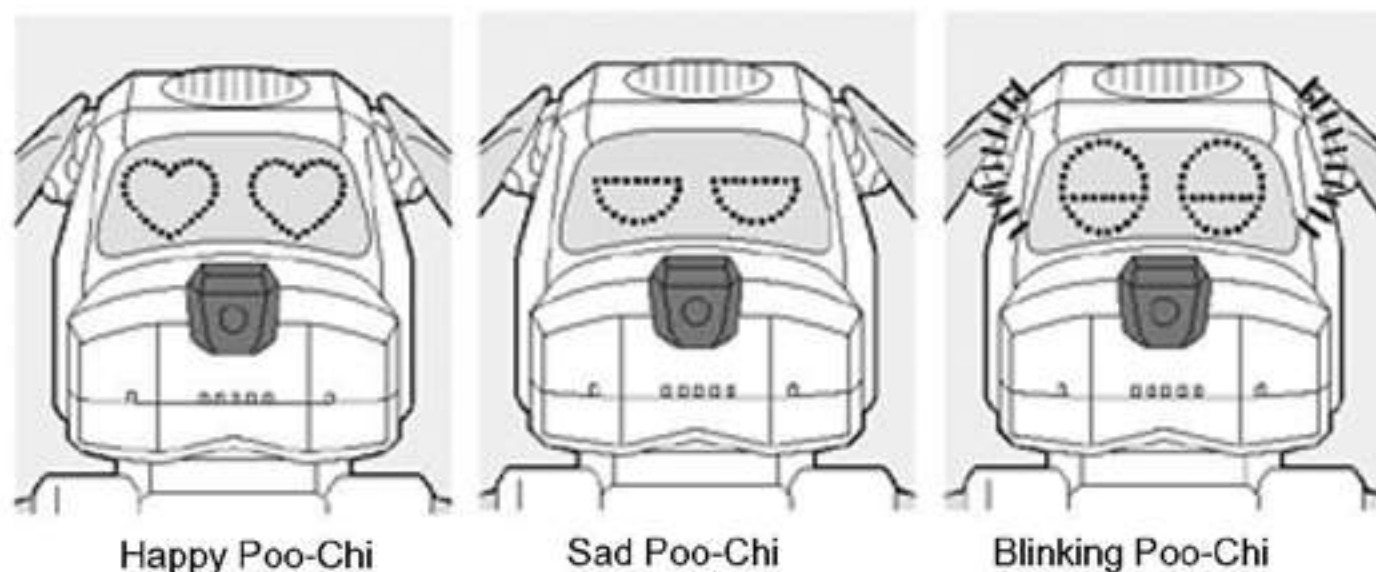
To activate the **TOUCH** sensor:

- **WAIT** until Poo-Chi stops moving.
- Simply press the button on top of Poo-Chi's head. If you press the head button once, Poo-Chi will respond. If you press the head button twice, Poo-Chi will respond. Press the head button up to six times quickly to see what Poo-Chi will do. Poo-Chi loves to play and be happy.



POO-CHI'S EYES

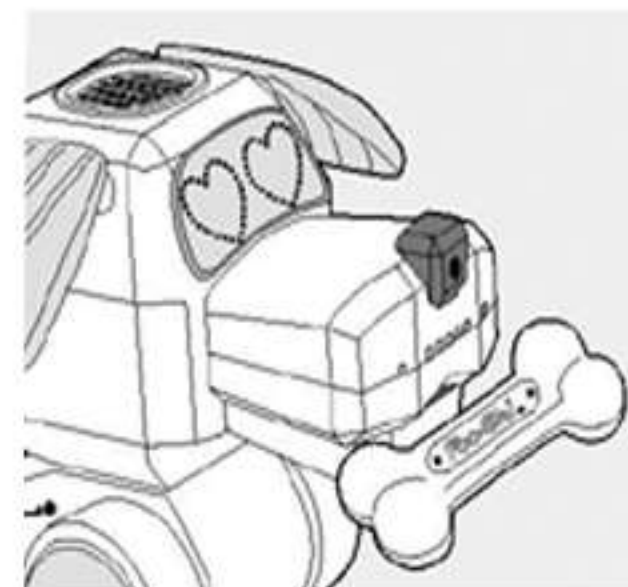
Poo-Chi's eyes are very expressive. Poo-Chi's eyes will tell you if he is happy, sad, sleepy, and that he loves you! Poo-Chi can even blink!



POO-CHI'S BONE

Poo-Chi loves to be cared for and the more you take care of Poo-Chi, the happier he will be. Feed Poo-Chi by holding the middle of the bone in front of Poo-Chi's mouth. Poo-Chi will respond with happy eyes, wagging tail and a special eating sound.

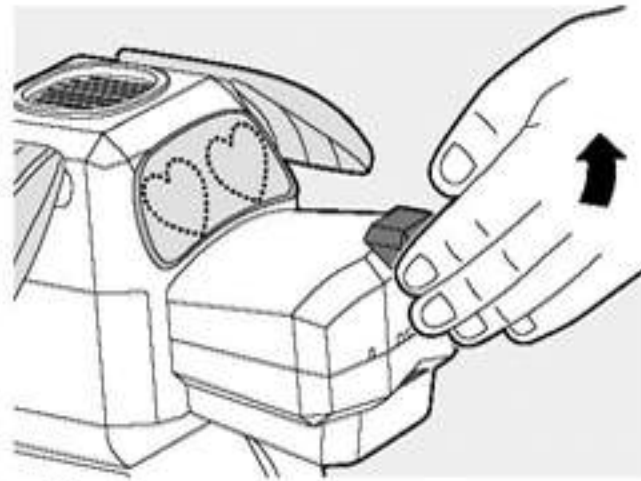
- Do not place the bone **INSIDE** of Poo-Chi's mouth – hold the bone in front of Poo-Chi's mouth to simulate feeding.
- Poo-Chi's bone does **NOT** require batteries.
- Do not attempt to open the bone.
- Avoid placing the bone close to any magnetic-sensitive object like a cassette tape, video tape, magnetic disk, credit card, etc.



LISTEN TO A SONG

To listen to one of Poo-Chi's favorite songs, please follow the sequence below:

1. Wait until Poo-Chi stops moving.
2. Hold your hand completely over Poo-Chi's nose.
3. While still holding your hand over Poo-Chi's nose, press the head button 5 times quickly (you must press the head button 5 times within 2 seconds). Poo-Chi will then sit down.
4. Wait until you hear 3 short beeps, remove your hand, then quickly press the head button again as follows:
 - press the head button 1 times to hear Wedding March
 - press the head button 2 times to hear Camptown Races
 - press the head button 3 times to hear Bingo
 - press the head button 4 times to hear I've Been Working on the Railroad
 - press the head button 5 times to hear Beethoven No 9
 - press the head button 6 times to hear When the Saints go Marching In



After each song is finished, Poo-Chi will return to his normal mode. To hear another song, begin with step 1 above.

SLEEPING

Because Poo-Chi is a puppy, he needs his sleep. Just like a real puppy, Poo-Chi will fall asleep when it is dark or when no one is playing with him. When Poo-Chi gets tired, he will sit down and his eyes will flash and close. You may even hear a little snore!

Sometimes it takes Poo-Chi a long time to fall asleep. First, he will make noises to try to get your attention. His eyes may even start to flash, depending on his mood. If he doesn't get your attention after 3 minutes, he will sit down and snore. Then if he still doesn't get your attention after the snoring, he will fall into a deep sleep.

To wake up Poo-Chi when he is in a deep sleep, press his head button. If Poo-Chi was sad when he fell asleep, it may take him a little while to completely wake up so you may need to press his head button more than once. If Poo-Chi was happy when he fell asleep, he will quickly wake up.

COMMUNICATING WITH ANOTHER POO-CHI

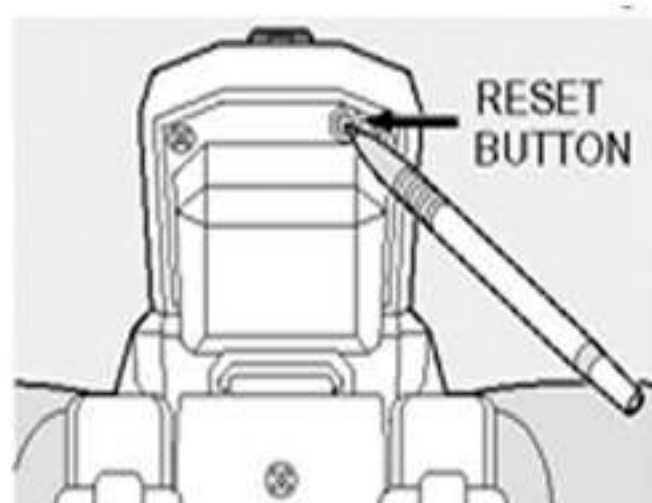
Poo-Chi will communicate with other Poo-Chi dogs. To begin communication, please follow the sequence below:

1. Place two Poo-Chi's so they face each other and are approximately 6"-12" apart.
2. Wait for both dogs to stop moving.
3. Press the head button **ONCE on BOTH DOGS at the SAME TIME.**
4. The dogs will begin to speak. If they like each other, they will sing a song together. If they don't like each other, they will growl at one another.
5. Poo-Chi dogs will automatically return to normal play mode after they communicate for approximately 2 minutes.
6. If you want Poo-Chi dogs to communicate again, begin with Step 1 above.

RESET

Press the **RESET** button only if Poo-Chi's movements seem to be malfunctioning.

To press the **RESET** button, turn Poo-Chi **upside down** and press the **RESET** button located inside Poo-Chi's upper jaw, inside his mouth. Press the **RESET** button once with a ball-point pen. Do not press the **RESET** button with any sharp instrument.



CLEANING INSTRUCTIONS



High temperature will destroy the unit. Do not leave unit in direct sunlight.



Clean only with a piece of soft dry cloth.

TROUBLESHOOTING

Poo-Chi is designed to provide hours of fun play. If Poo-Chi becomes erratic and you are having trouble, check to make certain that Poo-Chi has fresh batteries and then call Tiger Electronics' Customer Service Department at 1-800-844-3733.

If you can't see Poo-Chi's eyes, he may be asleep (see section titled "SLEEPING") or check to make certain there are fresh batteries.

You can wake up Poo-Chi by pressing the head sensor. If Poo-Chi was sad when he fell asleep, it may take multiple head presses to wake up Poo-Chi. If Poo-Chi was happy when he fell asleep, it will be easier to wake up Poo-Chi.

To wake up Poo-Chi when he is snoring, hold his special bone in front of his mouth or press his head button.

90-DAY LIMITED WARRANTY

Tiger Electronics, Ltd. (TIGER) warrants to the original consumer purchaser of this product that the product will be free from defects in materials or workmanship for 90 days from the date of original purchase. This warranty does not cover damages resulting from accident, negligence, improper service or use or other causes not arising out of defects in materials or workmanship.

During this 90-day warranty period, the product will either be repaired or replaced (at TIGER'S option) without charge to the purchaser, when returned with proof of the date of purchase to either the dealer or to TIGER.

Product returned to TIGER without proof of the date of purchase or after the 90-day warranty period has expired, but prior to one year from the original date of purchase, will be repaired or replaced (at TIGER'S option) for a service fee of US\$17.00. Payments must be by check or money order payable to Tiger Electronics, Ltd.

THE FOREGOING STATES THE PURCHASER'S SOLE AND EXCLUSIVE REMEDY FOR ANY BREACH OF WARRANTY WITH RESPECT TO THE PRODUCT.

All product returned must be shipped prepaid and insured for loss or damage to:

TIGER REPAIR DEPARTMENT
1000 N. Butterfield Road, Unit 1023
Vernon Hills, IL 60061, U.S.A.

The product should be carefully packed in the original box or other packing materials sufficient to avoid damage during shipment. Include a complete written description of the defect, a check if product is beyond the 90-day warranty period, and your printed name, address and telephone number.

THIS WARRANTY IS IN LIEU OF ALL OTHER WARRANTIES AND NO OTHER REPRESENTATIONS OR CLAIMS OF ANY NATURE SHALL BE BINDING ON OR OBLIGATE TIGER IN ANY WAY. ANY IMPLIED WARRANTIES APPLICABLE TO THIS PRODUCT, INCLUDING WARRANTIES OF MERCHANTABILITY AND FITNESS FOR A PARTICULAR PURPOSE, ARE LIMITED TO THE NINETY (90) DAY PERIOD DESCRIBED ABOVE. IN NO EVENT WILL TIGER BE LIABLE FOR ANY SPECIAL, INCIDENTAL, OR CONSEQUENTIAL DAMAGES RESULTING FROM POSSESSION, USE, OR MALFUNCTION OF THIS TIGER PRODUCT.

Some states do not allow limitations as to how long an implied warranty lasts and/or exclusions or limitations of incidental or consequential damages, so the above limitations and/or exclusions of liability may not apply to you. This warranty gives you specific rights, and you may also have other rights which vary from state to state.

This device complies with Part 15 of the FCC Rules. Operation is subject to the following two conditions :

(1) this device may not cause harmful interference, and (2) this device must accept any interference received, including interference that may cause undesired operation.

Warning: Changes or modifications to this unit not expressly approved by the party responsible for compliance could void the user's authority to operate the equipment.

NOTE: This equipment has been tested and found to comply with the limits for a Class B digital device, pursuant to Part 15 of the FCC Rules. These limits are designed to provide reasonable protection against harmful interference in a residential installation. This equipment generates, uses, and can radiate radio frequency energy and, if not installed and used in accordance with the instructions, may cause harmful interference to radio communications. However, there is no guarantee that interference will not occur in a particular installation. If this equipment does cause harmful interference to radio or television reception, which can be determined by turning the equipment off and on, the user is encouraged to try to correct the interference by one or more of the following measures:

- Reorient or relocate the receiving antenna.
- Increase the separation between the equipment and receiver.
- Connect the equipment into an outlet on a circuit different from that to which the receiver is connected.
- Consult the dealer or an experienced radio TV technician for help.

TIGER
ELECTRONICS
A division of Hasbro, Inc.



©, TM, & © 2000 Tiger Electronics. All rights reserved.
980 Woodlands Parkway, Vernon Hills, IL 60061, USA
©, TM, & © 2000 Tiger Electronics UK Ltd. All Rights Reserved.
Belvedere House, Victoria Avenue, Harrogate, North Yorkshire, United Kingdom HG1 1EL.
© SEGA TOYS 2000
PRINTED IN CHINA

706960001IWTI-02