



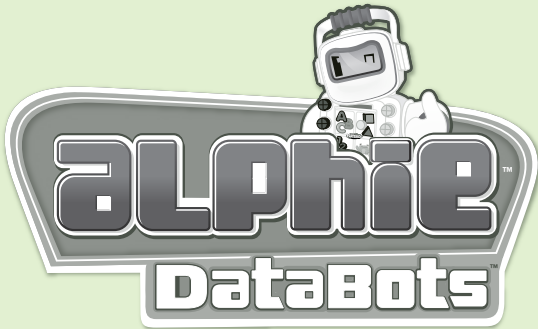
FCC STATEMENT
 This device complies with part 15 of the FCC Rules. Operation is subject to the following two conditions: (1) This device may not cause harmful interference, and (2) this device must accept any interference received, including interference that may cause undesired operation. This equipment has been tested and found to comply with the limits for a Class B digital device, pursuant to part 15 of the FCC Rules. These limits are designed to provide reasonable protection against harmful interference in a residential installation. This equipment generates, uses and can radiate radio frequency energy, and if not installed and used in accordance with the instructions, may cause harmful interference to radio communications. However, there is no guarantee that interference will not occur in a particular installation. If this equipment does cause harmful interference to radio or television reception, which can be determined by turning the equipment off and on, the user is encouraged to try to correct the interference by one or more of the following measures:
 • Reorient or relocate the receiving antenna.
 • Increase the separation between the equipment and receiver.
 • Consult the dealer or an experienced radio/TV technician for help.
CAUTION: Changes or modifications to this unit not expressly approved by the party responsible for compliance could void the user's authority to operate the equipment.

1. As with all small batteries, the batteries used with this toy should be kept away from small children who still put things in their mouths. If they are swallowed, promptly see a doctor and have the doctor phone (202) 625-3333 collect. If you reside outside the United States, have the doctor call your local poison control center.
2. Always follow the instructions carefully. Use only batteries specified and be sure to insert them correctly by matching the + and - polarity markings.
3. Do not mix old batteries and new batteries or standard (carbon-zinc) with alkaline batteries.
4. Remove exhausted or dead batteries from the product.
5. Remove batteries if product is not to be played with for a long time.
6. Do not short-circuit the supply terminals.
7. Should this product cause, or be affected by, local electrical interference, move it away from other electrical equipment. Reset (switching off and back on again or removing and re-inserting batteries) if necessary.
8. RECHARGEABLE BATTERIES: Do not mix these with any other types of batteries. Always remove from the product before recharging. Recharge batteries under adult supervision. DO NOT RECHARGE OTHER TYPES OF BATTERIES.

CAUTION:

IMPORTANT: BATTERY INFORMATION

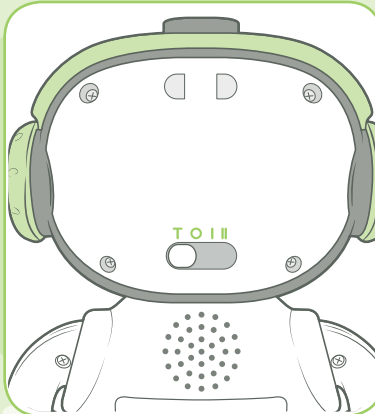
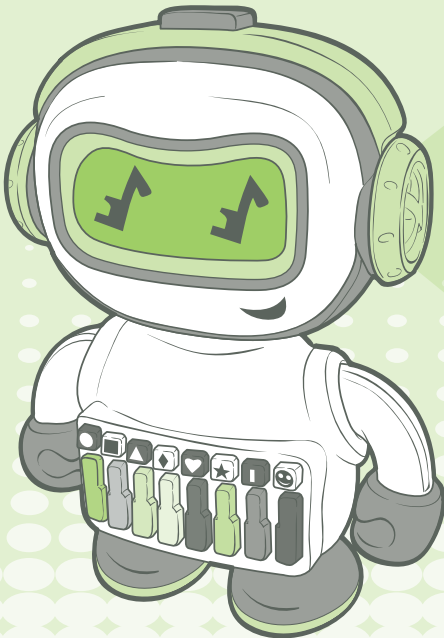
AGES
3+



Maestro-Bot™

x3
1.5V AAA or R03 size
BATTERIES INCLUDED

Replace with 3 x 1.5V "AAA" or R03 size batteries. Alkaline batteries recommended. Phillips/cross head screwdriver (not included) needed to replace batteries.



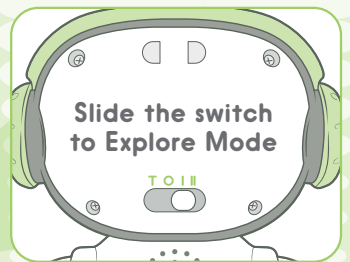
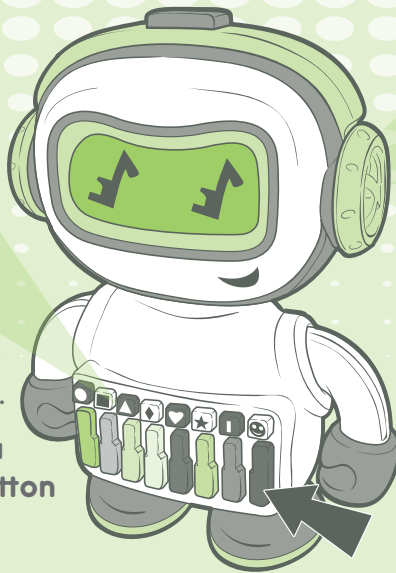
- T** - Try Me
- O** - Off
- I** - Explore
- ||** - Find It

BEFORE YOU BEGIN

I come in TRY ME mode. Turn me around and slide the switch on the back of my head to one of the PLAY modes. Now we're ready to get our groove on!

Explore Mode

- = Piano
- = Clavinet
- ▲ = Organ
- ◆ = Synthesizer
- ♥ = Saxophone
- ★ = Flute
- ▮ = Tuba
- 😊 = Steel Drum



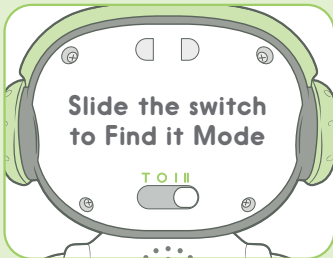
Press the shape buttons to change instrument sounds.

Press the pink button for a low C. Press the purple button for a high C.

Press any of my colored keys to play a note, similar to playing a scale on the piano.

To Record Your Music

Press the button on my head and begin playing. Record up to 20 notes! Press my head button again and I'll play your song back to you. If you want to hear it again, press my head button twice.



Find It Mode

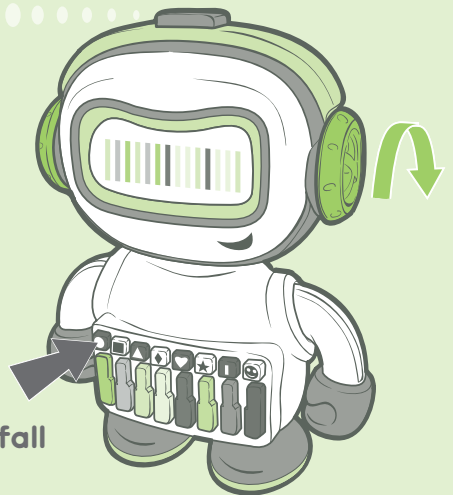
Slide the switch on the back of my head to the Find It mode position. I'll start asking you questions like, "Find the key with the diamond shape on it." Complete that level and advance to the next one. The questions will become more challenging as you advance levels!

Parent Tip: Help your child follow the clues by explaining that the shape keys are the ones on top row, and the color keys are the ones on the bottom row.

Concert Mode

Turn my headphone dial to one of the song patterns. Match the pattern to the keys on my keyboard to play that song. You can play Three Blind Mice, Old MacDonald or Twinkle, Twinkle!

Press the shape buttons to select instrument sounds. Press my head button, and I'll play the song for you!



Sleep Mode

If you don't play with me for about 90 seconds I will fall asleep. Push any button to wake me up.

TO REPLACE BATTERIES

Loosen screw in battery compartment door with a Phillips/cross head screwdriver (not included). Remove door (screw stays attached to cover). Remove and discard batteries. Insert fresh batteries as shown. Replace door, and tighten screw.

